

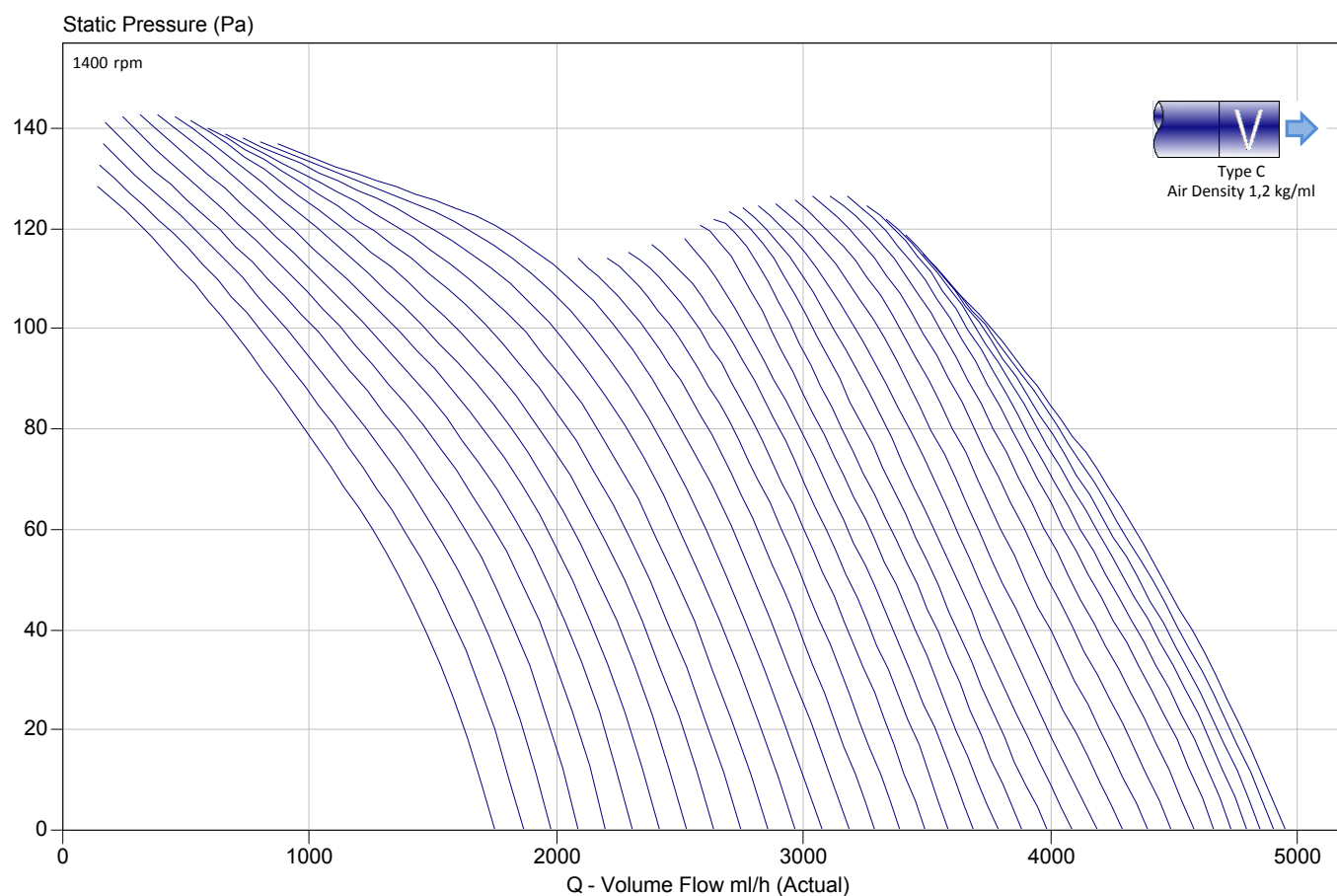
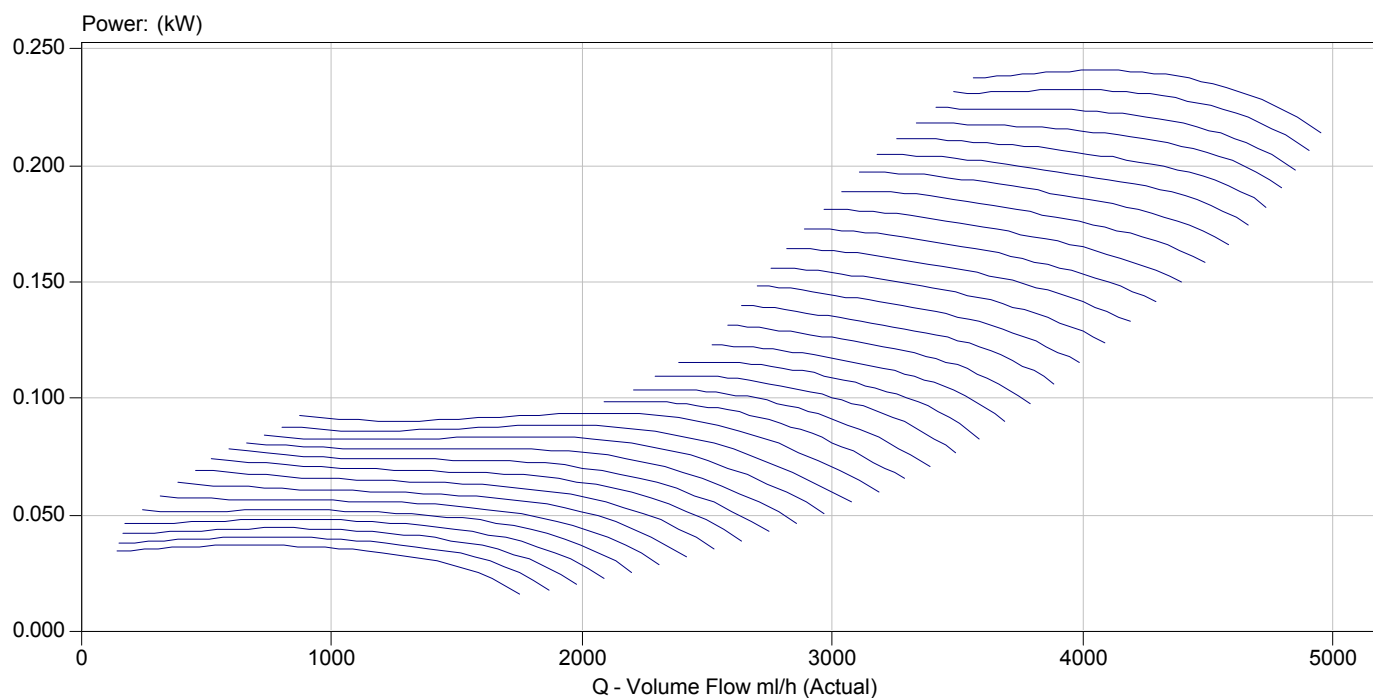
Quotation Number	:		Project Code	:	
Project Name	:	JMv for exhibitions	Customer	:	
Item Reference:	:		Date:	:	czwartek, luty 22, 2018
Fan Code		40JMv/14/4/6	Performance data has been derived from tests carried out in a Flakt Woods laboratory, in accordance with ISO 5801 and is specifically applicable for Ducted installations. When an electronic controller is incorporated, enhanced motor noise can occur - particularly when the operating speed is well below maximum. FWL therefore recommend using an auto transformer speed controller for noise sensitive applications. Bifurcateds are Erp exempt when used continuously at >100C. They are not for use in the EEA at lower temperatures.		
Fan Diameter / Size		400 Size / mm			
Blades		6			
Installation Type / Form of Running		C / B			
Fan Casing		Long	Acoustic data has been derived from tests carried out in a Flakt Woods laboratory, in accordance with BS 848 Pt 2, 1985 / ISO 5136 under Ducted conditions. The LpA figure provided is the overall Inlet sound pressure level calculated at the specified distance, under spherical, free field conditions. Breakout levels stated are estimated from induct sound power levels and are provided for guidance.		
Motor Frame		BT9 [Class F]			
Motor Rating		0,250 kW			
Full Load Current		1,56 A			
Starting Current		3,45 A	Acoustic figures for adjusted running speeds have been interpolated and are for reference only.		
Motor Mounting		Pad			
Electrical Supply		220-240 Volts 50 Hz 1 Phase			
Start Type		DOL			
Motor Winding		Standard	Terms and Conditions:This offer is made subject to the terms and conditions detailed on the accompanying letter.		
Enclosure		Standard All			
ErP [FMEG] Rating		N 51 (ErP Compliant)			
ErP [FMEG] Target		N 40			
FMEG Blade Angle [Range]		21° [2° - 35°]			
Measurement Category		C (Static)			
VSD		N			
Fan + Motor Efficiency		41,3% (0,73 m/s @ 119 Pa)			
Motor Input Power (ErP)		0,210 kW			
Air Density		1,2 kg/m³ / 20 °C / 0 m / 40% RH			
Smoke Venting		Non Smoke Venting			

[illegible]



Quotation Number :
Project Name : JMv for exhibitions
Item Reference: :

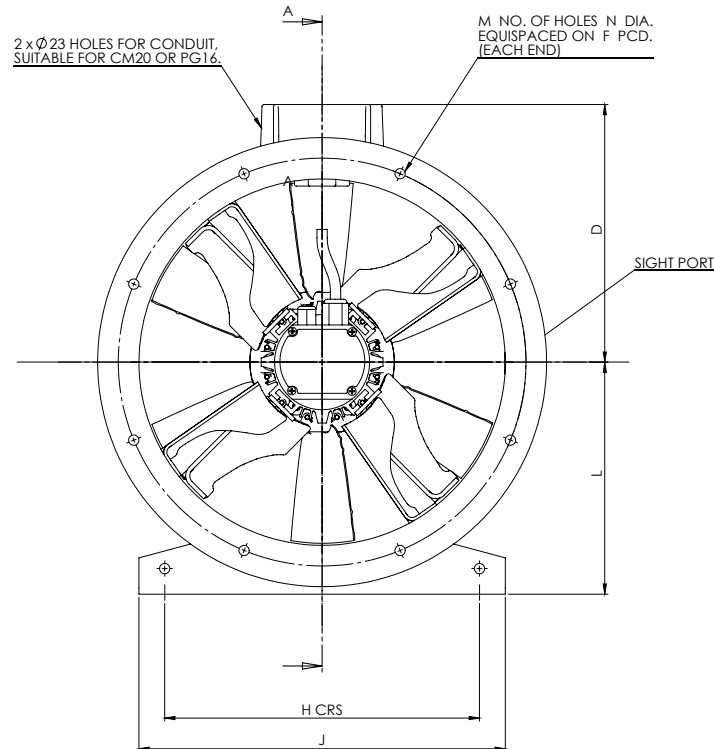
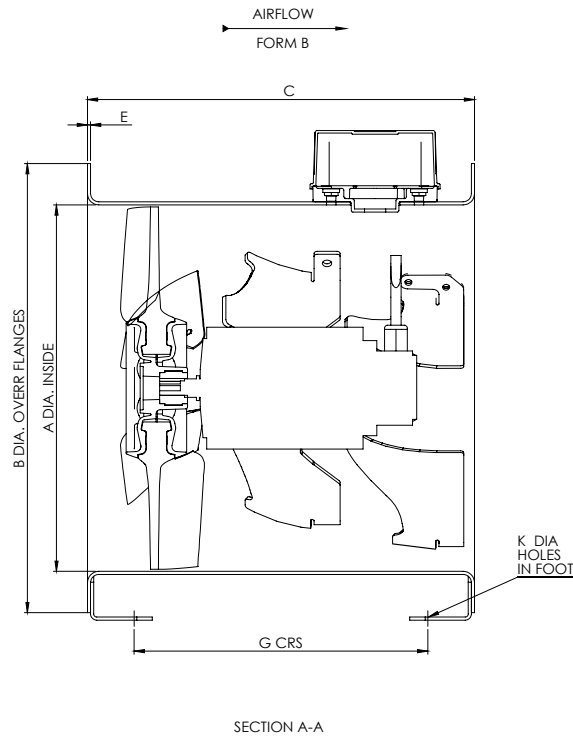
Project Code :
Customer :
Date: : czwartek, luty 22, 2018
Fan Code : 40JMv/14/4/6





Quotation Number :
Project Name : JMv for exhibitions
Item Reference :

Fan Code : 40JMv/14/4/6
Customer :
Date : czwartek, luty 22, 2018



A	400
B	480
C	375
D	272
E	3
F	450
G	285
H	350
J	400
K	10
L	250
M	8
N	10
Weight (kg)	25

Notes : Dimensions shown in mm / Weight in kg

Reference :Catalogue drawing

This drawing shows dimensions that should be used as a guide only and are subject to change. Certified drawings are available on request.

, ,

Tel: Fax:

Printed on 22 luty 2018